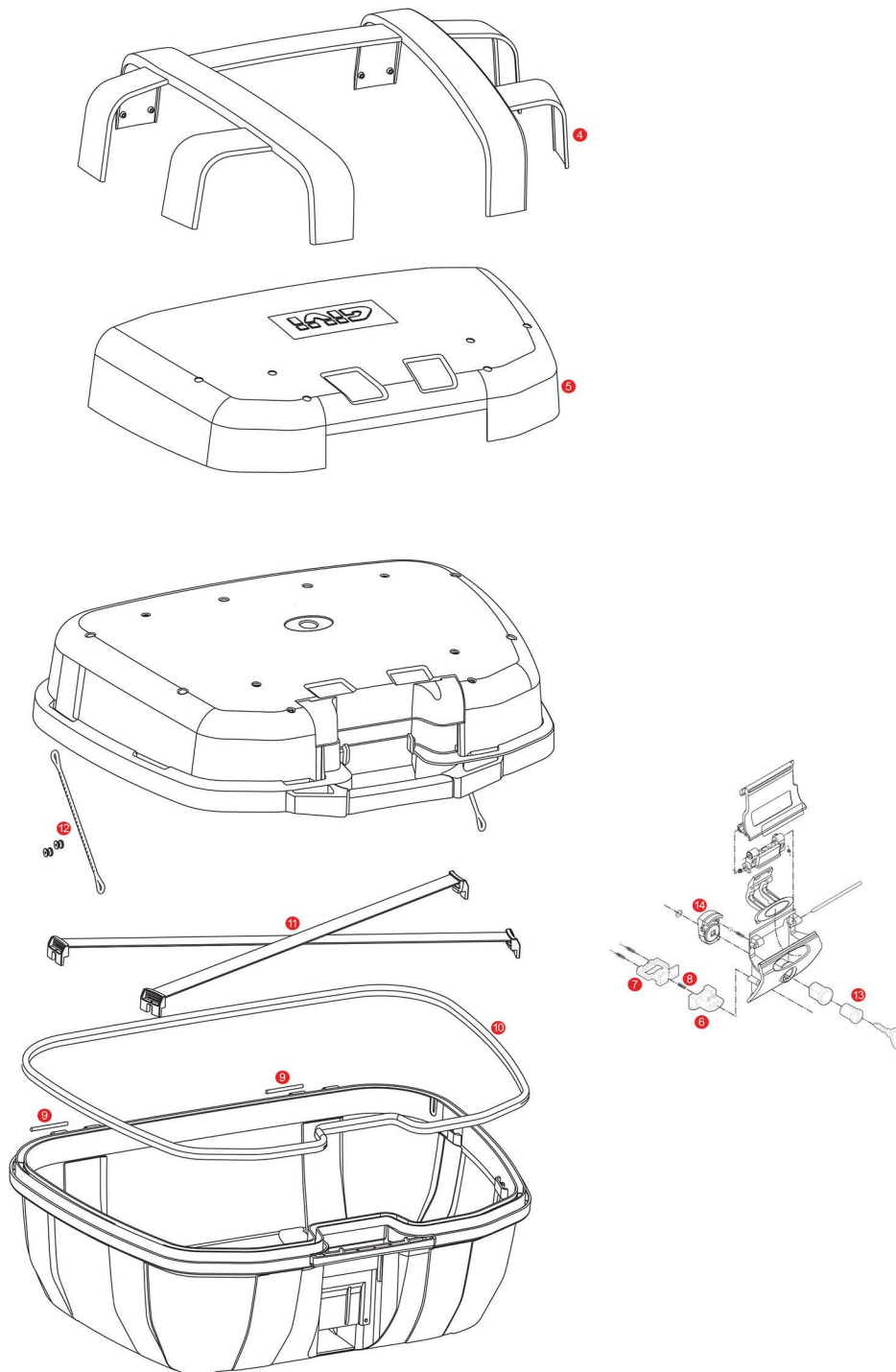


## TRK52N / TRK52B TREKKER



	<b>ZTRK52CNM</b>	TRK52N assembled top-shell
	<b>ZTRK52CBM</b>	TRK52B assembled Top Shell
	<b>ZTRK52FNM</b>	TRK52N assembled bottom-shell black
	<b>Z641N52M</b>	Hinge stop
4	<b>Z2202R</b>	Black metal plate cover/cap
5	<b>Z2211OXCR</b>	Aluminium cover with anodizing cover/cap for TRK52N
	<b>Z2211NR</b>	Aluminium cover black painted for TRK52B Black Line
6	<b>Z645CR</b>	Opening push button chromed

7	<b>Z1782CR</b>	Bolt
8	<b>Z191R</b>	Push button spring, 1 pcs.
9	<b>Z590R</b>	Pin. Medium, 2 pcs.
10	<b>Z3220R</b>	Trim
11	<b>Z2170R</b>	Elastic belt
12	<b>Z599</b>	Nylon stop bag opening yarn
13	<b>SL101</b>	Security lock set including cylinder, 2 keys, bush and under lock platelets
14	<b>Z4513R</b>	Plate below lock for Security Lock key